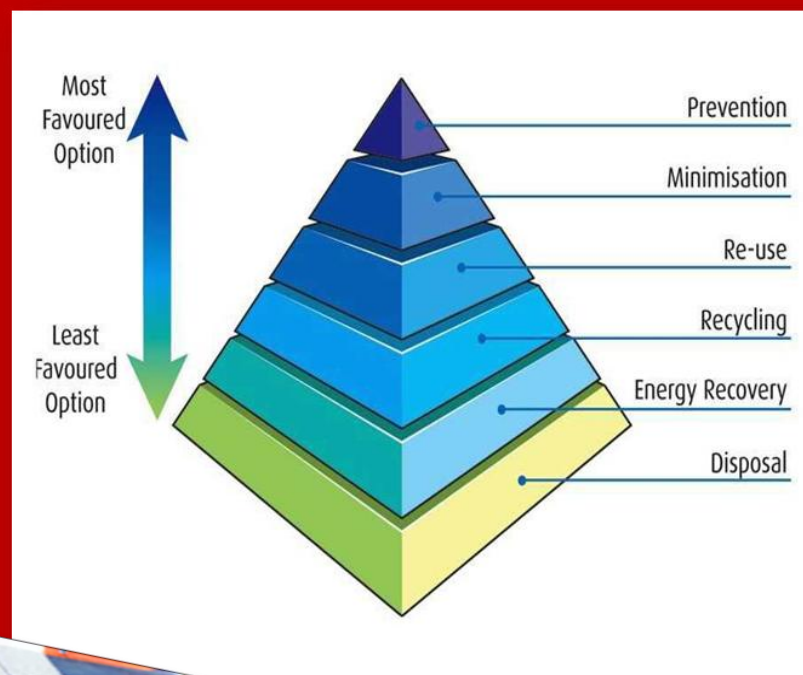


## Waste Management – FAQs



**This publication is intended for guidance purposes only and further legal support should be sought where necessary. Whilst every effort has been made to ensure this document is factually correct at the time of publication, its content is not intended for use without substantiating investigations by the users. No part of this publication may be reproduced, stored or transmitted in any way without prior permission from the publisher.**

## **What is waste?**

There are great difficulties in defining what is meant by waste. It is often said that one person's waste is another person's raw material. Generally, it is anything that doesn't make it to the final product. Some examples include:

- Agricultural Waste
- Animal by-products
- Biowastes
- Clinical waste
- End of Life Vehicles (ELVs)

## **Why do we need to control and regulate waste?**

We need to cut down on our consumption of natural resources not only because they will eventually run out, but also because we are running out of landfill space. Another issue is that some material in the landfills decays and gives off methane and carbon dioxide, both of which contribute to global warming.

## **How is the management of waste regulated?**

### **Waste Regulations 2011**

- require businesses to confirm that they have applied the waste management hierarchy when transferring waste, and include a declaration on their waste transfer note or consignment note
- introduce a two-tier system for waste carrier and broker registration, including a new concept of a waste dealer
- make amendments to hazardous waste controls
- exclude some categories of waste from waste controls

The regulations also require the separate collection of waste paper, metal, plastic and glass from 1 January 2015.

Note that Scotland is regulated differently – see below.

## **Do the Regulations affect me?**

Every business is under a duty of care to ensure that it handles its waste safely and in compliance with the appropriate regulations. The basic responsibilities are to; know whether wastes are hazardous or non-hazardous, store wastes in suitable containers at secure locations, label the waste containers, check the wastes are subsequently handled by those who have authorisation and so on. It is important that a business must check that anyone who collects its waste is authorised to take it, which means that they are either: registered as a carrier of waste, exempt from registration, or are a waste collection authority (in England and Wales).

The regulations affect businesses that:

- Produce waste
- Import or export waste
- Carry or transport waste
- Keep or store waste
- Treat waste
- Dispose of waste
- Operate as waste brokers or dealers.

The **Waste Hierarchy** (as set out in the **Waste Framework Directive**) to ensure waste is dealt with in this priority. Following the waste hierarchy is good practice which businesses should adopt as a matter of course.

- 1) Prevention;
- 2) Re-use (which of your waste materials could be reused – do you use paper on both sides; do you have china mugs in the canteen which can be reused rather than plastic ones; can waste washing water be reused as ‘grey water’ in the toilet cistern?);
- 3) Recycling (speak to your waste carrier and find out what waste they will take for recycling and if they want it segregated. If they cannot help, contact a specialist recycling company);
- 4) Other recovery (for example, energy recovery);
- 5) Disposal.

As of September 2011, it is of the utmost importance that whenever you pass waste on to someone else, you will have to declare on the [waste transfer note](#), or [consignment note](#) for hazardous waste, that you have applied the waste management hierarchy.

## How to apply the waste hierarchy to most materials

Paper and Card	Food	Garden Waste	Textiles	Wood	Glass	Metals	Plastics±	WEEE	Tyres	Residual 'black bag'
Prevention	Prevention	Prevention	Prevention	Prevention	Prevention	Prevention	Prevention	Prevention	Prevention	Prevention
Preparation for re-use			Preparation for re-use	Preparation for re-use	Preparation for re-use	Preparation for re-use	Preparation for re-use	Preparation for re-use	Re-treading	
Recycling	Anaerobic Digestion	Anaerobic Digestion (dry) <sup>2</sup>	Recycling	Recycling; energy recovery♦ (preferable to recycling for lower grade materials)	Recycling in a remelt process	Recycling	Closed loop recycling Other recycling	Recycling (esp. suitable for metals and high quality plastic)	Recovery: use in road surfaces	Solid recovered fuel derived from MHT or MBT, where it replaces coal*
Energy recovery♦ (esp. suitable for short fibres or contaminated materials)	Composting; other energy recovery technologies	Composting; other energy recovery technologies			Other recycling			Energy recovery♦ (esp. suitable for non-hazardous mixed plastic)	Energy recovery in cement kilns	Energy Recovery, all technologies (Heat Only)
Disposal	Disposal	Disposal	Energy recovery♦	Disposal	Energy recovery♦	Recycling after energy recovery	Energy recovery♦	Energy recovery♦ (esp. suitable for non-hazardous mixed plastic)	Energy recovery through pyrolysis	Energy Recovery, all technologies (CHP)
									Other recovery (eg drainage fill & sea defences)	Energy Recovery, all technologies (Electricity Only)
									Gasification/incineration with EfW	MBT or MHT outputs used as fuel (but do not replace coal) or *
									Microwave treatment	Disposal

\*the impact of CHP technology, which can improve the efficiency of each of these options, is not illustrated here

± the hierarchy may be different for some forms of bio-based plastics

♦ 'energy recovery' covers a range of technologies, some of which will be more environmentally beneficial than others. Future versions will differentiate between technologies as more scientific evidence becomes available.

\*2009 AEA – Report to the Welsh Assembly Government: *Modelling of Impacts for Selected Residual Waste Plant Options using WRATE*

### **I am a waste carrier, broker or dealer – how do the Regulations affect me?**

The regulations introduce a two-tier system for waste carrier, broker and dealer registration:

#### *Upper tier registration*

You need to register as an upper tier carrier or broker if you want to carry, broker or deal in other people's controlled waste, unless you are in one of the lower tier categories listed below. You also need to register as an upper tier carrier if you carry your own construction or demolition waste.

#### *Lower tier registration*

You need to register as a lower tier carrier if you only carry, broker or deal in:

- ✓ animal by-products
- ✓ waste from mines and quarries
- ✓ waste from agricultural premises

## **What is hazardous waste?**

Some types of waste are harmful to human health, or to the environment, either immediately or over an extended period of time. These are called hazardous wastes.

Hazardous waste is defined by reference to the [European Waste Catalogue](#).

The [Hazardous Waste Regulations 2005](#) (as amended 2009) introduce a new category, H13 Sensitizing, to the list of properties defining waste as hazardous. Sensitizing substances cause hypersensitisation, i.e. the substance will cause adverse effects if you inhale it or it penetrates your skin and you are then further exposed to the substance. These changes mean that some non-hazardous wastes may be reclassified as hazardous wastes, so be diligent with classifying your waste!

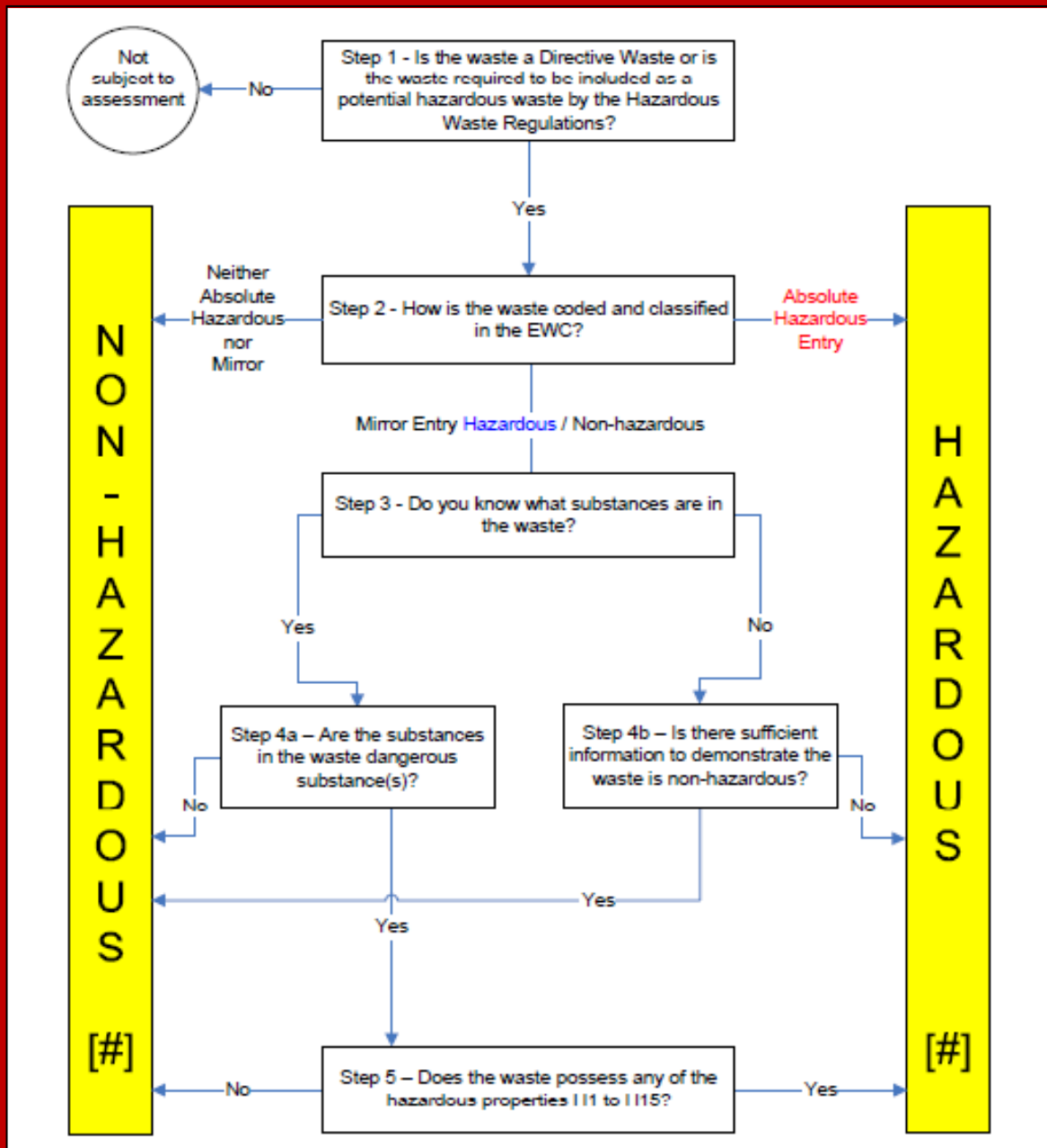
*The major changes to the way hazardous waste is managed are listed below and came into effect on 29 March 2011:*

- Mixing of hazardous waste can only be carried out if you hold an appropriate permit allowing you to do this and the activity must comply with Best Available Techniques (BAT).
- A new hazardous property (H13 sensitizing) has been introduced and will need to be used when assessing hazardous waste.
- There are changes to the record keeping requirements, in particular for brokers.

*The following changes came in on 28 September 2011:*

- The consignment note has been amended and the multiple consignment procedure has been simplified.
- The waste hierarchy must be considered and applied in a priority order when hazardous waste is transferred.
- For waste received on or after this date there are revised procedures to be followed for consignee returns.

**Is my waste hazardous?**  
**Source: DEFRA guidance**



### **What types of waste are excluded under the new Regulations?**

- Land spreading animal by-products that are covered by the Animal By-Product Regulation, organic fertilisers and soil improvers, and milk spread outside the farm of origin or digestive tract content
- Incinerating dead pets in crematoria with a capacity of less than 50kg per hour.
- Some faecal matter, straw, farming and forestry materials, depending on how you use the material and the potential for harm to the environment or human health.
- Most radioactive waste is controlled by radioactive substances regulation, and does not require waste control.

### **Case study:**

Bell Brush Ltd is a small company with 12 employees. It is a wholesale distributor of a range of cleaning products including brooms, litter pickers, shovels, tools and signs. As a result of its awareness of environmental legislation and its obligations, Bell Brush undertook the following initiatives:

- Reuse of office paper for drafts, memos, messages and calculations – and then shredding this reused paper for use as packaging
- Reuse of cardboard where possible
- Reuse or recycling of boxes and packaging material
- Consideration of reducing the overlap shrink-wrapping of pallets
- Requests to its suppliers to; a) supply goods in reusable and refillable packaging and b) reduce packaging by volume and weight

By recycling and so on, the company achieved a 50% reduction in waste disposal costs and similar amount on packaging costs.

What other businesses can take from this is that so many waste materials which could be reused or recycled are being discarded – refer back to the waste hierarchy

### **What is agricultural waste?**

Any substance or object from premises used for agriculture or horticulture, which the holder discards, intends to discard or is required to discard. It is waste specifically generated by agricultural activities. For example, waste which came from a farm shop or a vegetable packing plant would not be agricultural waste.

Some examples of agricultural waste are:

- Empty pesticide containers;
- Old silage wrap;
- Out of date medicines and wormers;
- Used tyres;
- Surplus milk.

Since 2006, agricultural waste has been subject to the same controls that have applied to other sectors for many years. On 15 May 2006, uncontrolled burning or tipping of waste on farms became illegal.

### **What is clinical waste?**

Clinical Waste is defined in the [Controlled Waste Regulations 1992 \(as amended 2012\)](#) as:

a) 'any waste which consists wholly or partly of human or animal tissue, blood or any other body fluids, excretions, drugs or other pharmaceutical products, swabs or dressings, or syringes, needles or other sharp instruments, being waste which unless rendered safe may prove hazardous to any person coming into contact with it;

b) and any other waste arising from medical, nursing, dental, veterinary, pharmaceutical or similar practice, investigation, treatment, care, teaching or research, or the collection of blood for transfusion, being waste which may cause infection to any person coming into contact with it'

So, clinical waste falls into two main categories:

- Waste which poses a risk of infection;
- Medicinal waste.

Generally, clinical waste is any item which can be hazardous to health. This includes dressings, dialysis products, needles, empty insulin cartridges or syringes. These items require a separate collection as they need to be incinerated.

***How do I dispose of clinical waste?*** The council provides a specialist collection service of clinical waste as well as sharps for households. Once you have registered with them, they will provide you with Orange bags to collect the waste. For larger, industrial clinical waste, there are specialist collectors who may be contacted to deal with this.



### **Will I have to pay tax when I dispose of waste?**

Yes - landfill tax is a tax on the disposal of waste. It aims to encourage waste producers to produce less waste, recover more value from waste, for example through recycling or composting and to use more environmentally friendly methods of waste disposal.

### ***What does the tax apply to?***

Landfill Tax applies to all waste:

- Disposed of by way of landfill
- At a licensed landfill site
- On or after 1 October 1996
- Unless the waste is specifically exempt

The tax is charged by weight and there are two rates. Inert or inactive waste is subject to the lower rate.

### **How is waste regulated in Scotland?**

**The Waste (Scotland) Regulations 2012** - the aim of these Regulations is the **Zero Waste Plan**. It sets out the strategic direction for waste policy in Scotland over the next decade and is intended to be an economic strategy and a resource strategy – not simply a waste strategy. It sets out the Scottish Government's vision for achieving a zero waste society, “where waste is seen as a valuable resource, valuable materials are not disposed of in landfills, and most waste is sorted for recycling, leaving only limited amounts to be treated”

*The key proposals in the Regulations are:*

- A requirement to remove key recyclables (plastics and metals) from mixed waste prior to incineration (from 1 July 2012);
- A requirement for businesses to present dry recyclables (metals, plastics, paper, card and glass) and food waste of more than 50 kg/week for collection from the end of 2013, with those producing less than 50kg/week exempt until the end of 2015.
- A requirement on local authorities to provide householders with a collection service for dry recyclables (end of 2013) and food waste (end of 2015);
- A ban on materials collected separately for recycling going to landfill or incineration (end of 2013); and
- A ban on biodegradable municipal waste going to landfill, thus helping to substantially reduce harmful emissions of methane (end of 2020).

Note that from 2016, the 50kg requirement will drop to 30kg!

How do [the Environmental Permitting Regulations 2010](#) affect me?

- If you are bailing, compacting or storing waste on your site, you need to apply for an exemption licence, which is free from the [Environment Agency](#) website and lasts for three years.

How can Crowberry Consulting help you?

- Evaluate your compliance with the Regulations
- Provide internal audits on the use of waste transfer notes and consignment notes
- Complete a ‘waste map’ for your organisation, and see what materials can be more effectively recycled and reused, thus reducing waste disposal costs.
- Connect with local companies who may pay a value for your waste
- Provide training to your employees on the duty of care relating to waste management.

Compiled by Kirsty Ramsay LLB, Environmental Legal Consultant  
June 2012